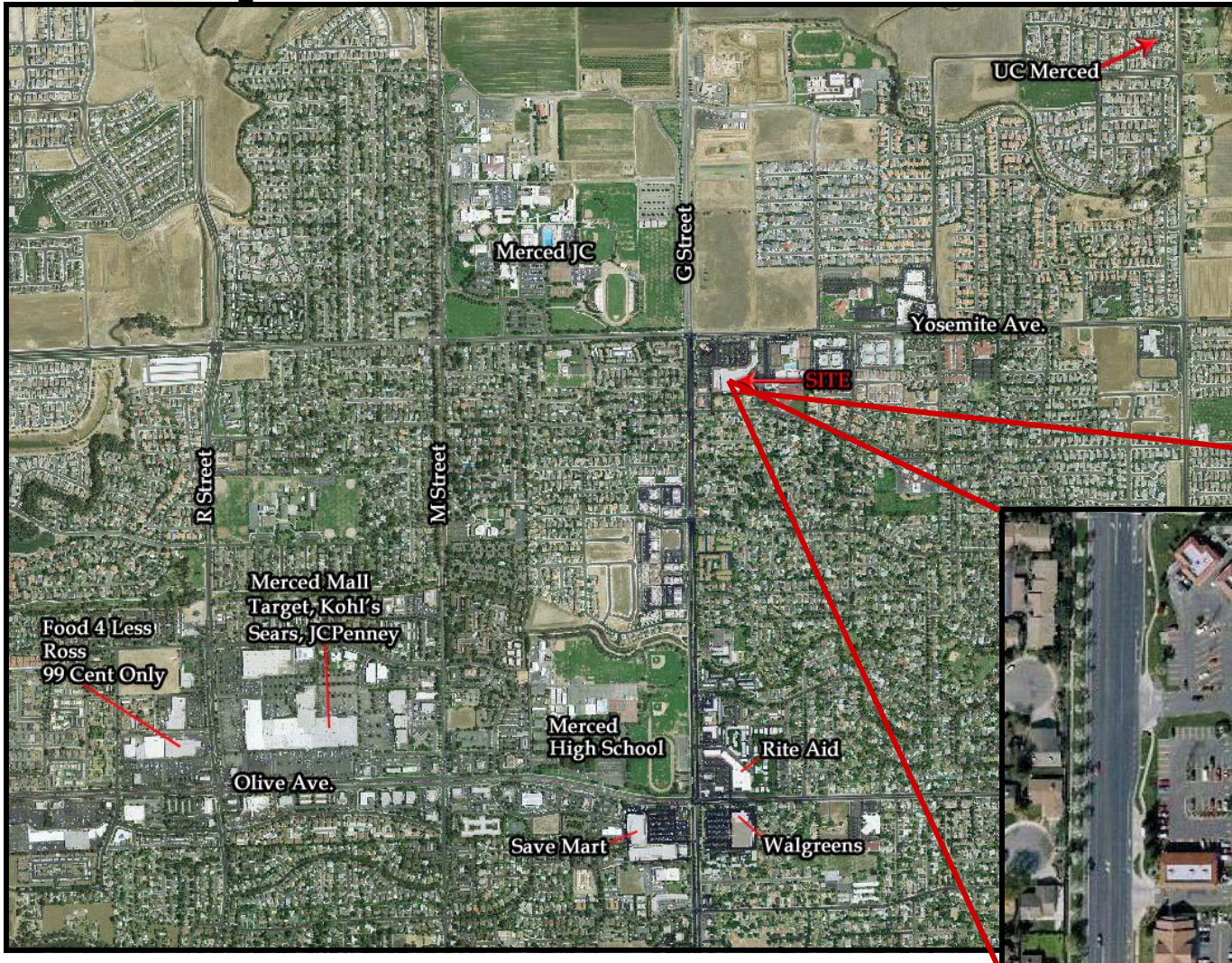


COSOL COMMERCIAL REAL ESTATE

Yosemite North S.C. Merced, CA.

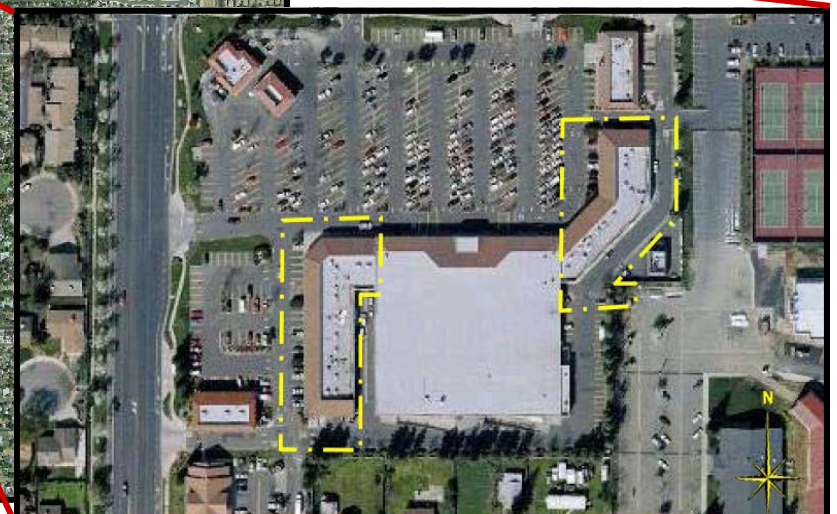


For Information Contact:

Tim Bettencourt
tbettencourt@cosol.net

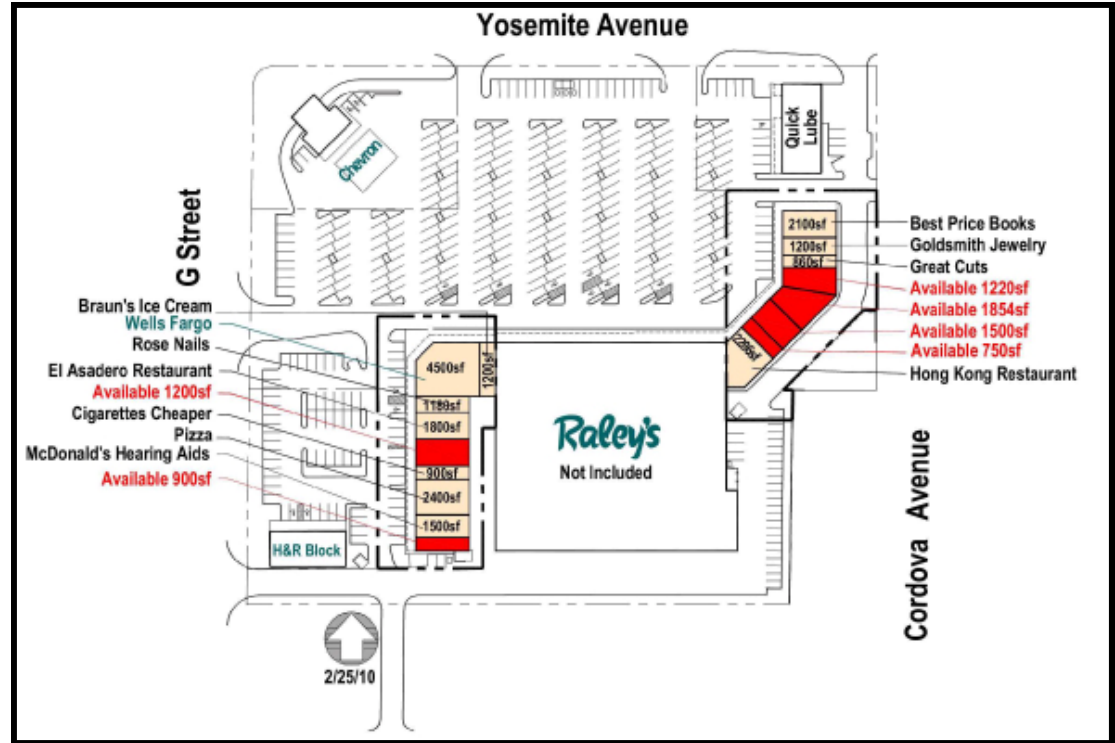
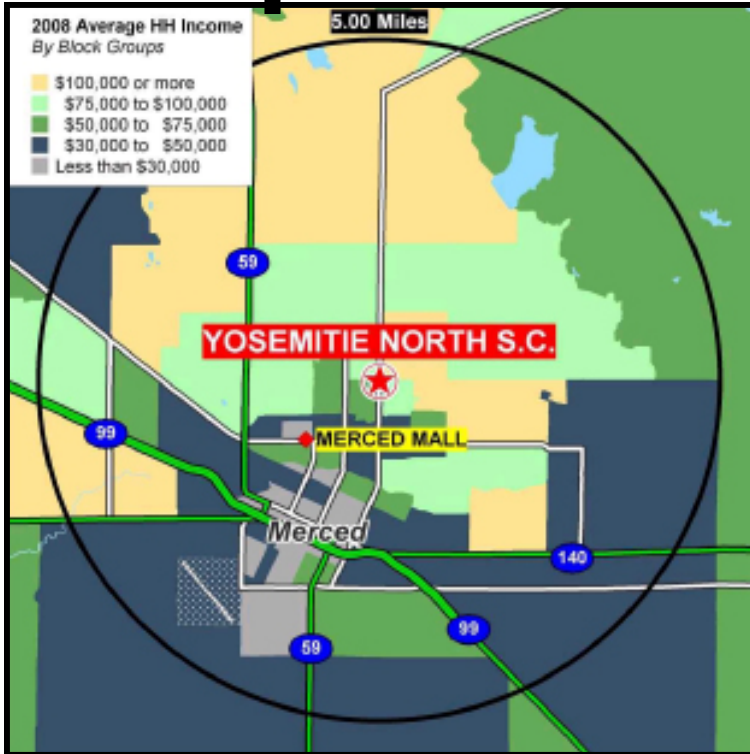
Jake Maiorino
jmaiorino@cosol.net

(209)521-1591
www.cosol.net



COSOL COMMERCIAL REAL ESTATE

Yosemite North S.C. Merced, CA.



Demographics

2009 Estimates	1Mile	3Mile	5Mile
Total Population:	13,550	63,921	91,764
Avg. HH Income:	\$74,352	\$62,116	\$59,126

For Information Contact:

Tim Bettencourt
tbettencourt@cosol.net

Jake Maiorino
jmaiorino@cosol.net

(209)521-1591
www.cosol.net