

# FOR SALE OR LEASE

**4,965 SQ. FT. Office Building**

**2020 Standiford Ave., Bldg.**

- Premier office location
- Close proximity to Highway 99
- Fully improved office suites
- All or a portion available
- Ample parking
- Beautiful garden office setting
- CC&R protected office complex



Building “D” of the northwest office containing 4,965 square feet. The building is currently divided into 5 separate office suites, but could be a single tenant building.

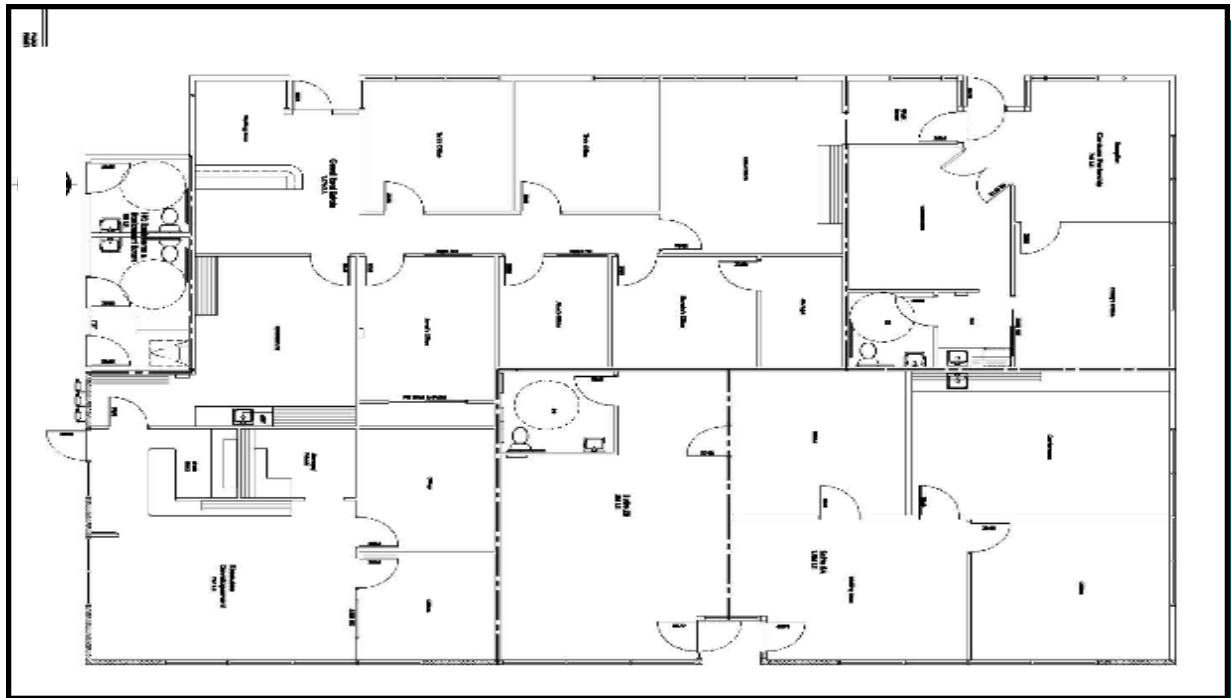


**Tim Bettencourt:**  
**CoSol**  
**Commercial Real Estate**  
2020 Standiford Ave., Ste. D-1  
Modesto, CA  
(209) 521-1591  
Lic. #00864765

# Aerial of Modesto, Ca



# Floorplan of the Building



Tim Bettencourt ■ 2020 Standiford Ave.,D-I Modesto, CA ■ Phone: 209-521-1591 ■ Fax: 209-521-0142

CoSol Commercial Real Estate

Lic. #00864765