

RETAIL SPACE FOR LEASE $\pm 13,780$ SF

1415 Badger Flat
Los Banos, CA



Tim Bettencourt
CA DRE LIC #00864765
tbettencourt@cosol.net
(209)521-1591

Jake Maiorino
CA DRE LIC #01453218
jmaiorino@cosol.net



Information contained herein has been obtained from sources we deem reliable. We have no reason to doubt its accuracy, but we do not guarantee it.

RETAIL SPACE FOR LEASE $\pm 13,780$ SF

1415 Badger Flat
Los Banos, CA



AVAILABLE SPACE: $\pm 13,780$ SF (Divisible)

LEASE RATES: \$1.10 NNN

FEATURES:

- Site offers Hwy 152 exposure
- Located adjacent to Stone Creek Shopping Center anchored by Target, Lowe's, Petco, Dollar Tree, Famous Footwear, Rabobank, Starbucks and GNC.
- Former Harley Davidson dealership (large open floor plan, 8'x12' roll up door and clear span ceiling)
- Total building size is 13,780 SF ($\pm 9,370$ SF – former Harley Davidson)
- Located in the Stone Creek master planned community consisting of over ± 490 acres of former commercial and residential development

Tim Bettencourt
CA DRE LIC #00864765
tbettencourt@cosol.net
(209)521-1591

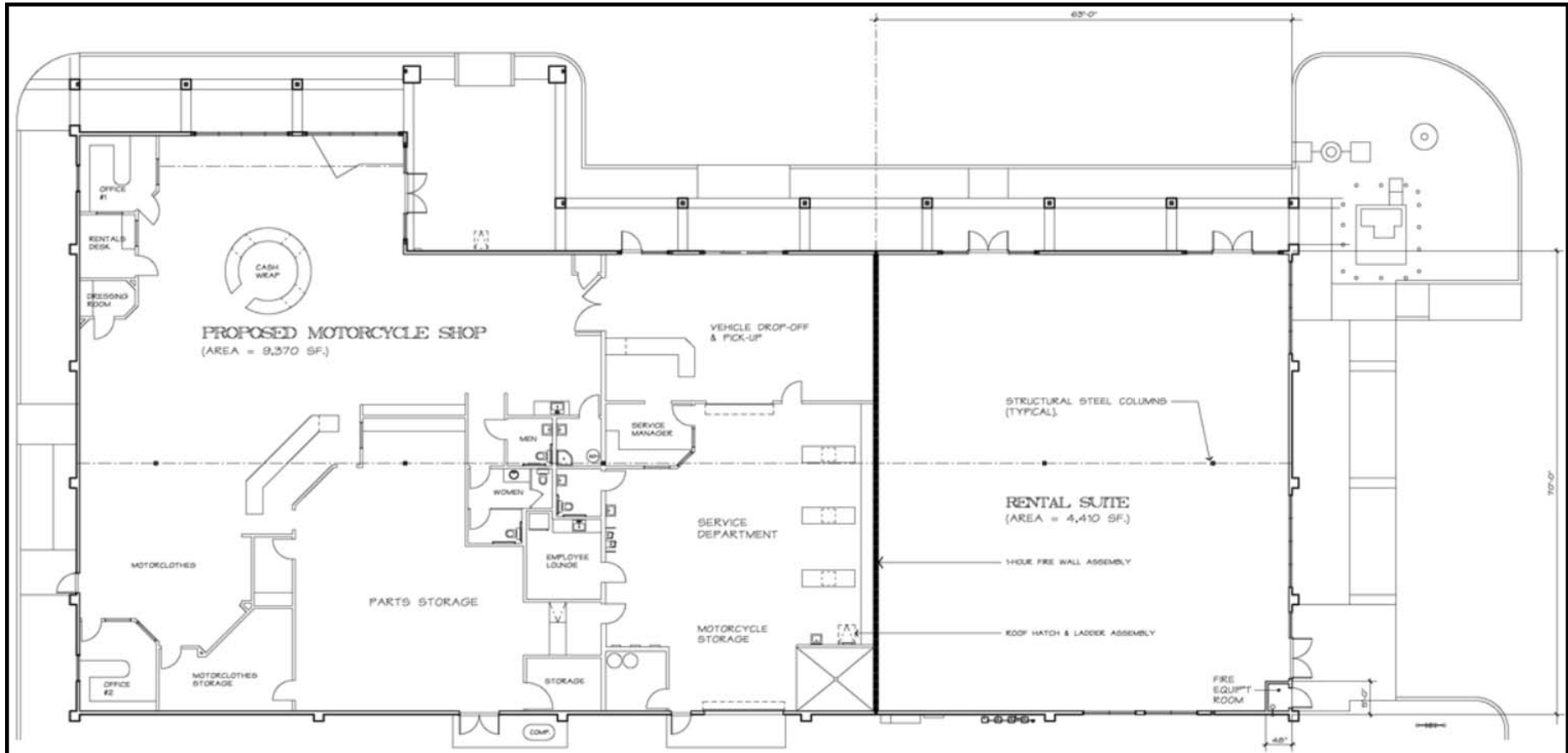
Jake Maiorino
CA DRE LIC #01453218
jmaiorino@cosol.net



RETAIL SPACE FOR LEASE $\pm 13,780$ SF

1415 Badger Flat
Los Banos, CA

FLOOR PLAN



Tim Bettencourt
CA DRE LIC #00864765
tbettencourt@cosol.net
(209)521-1591

Jake Maiorino
CA DRE LIC #01453218
jmaiorino@cosol.net

