

# FOR LEASE- 1311 Country Club Drive - Madera, CA



	1 Mile	3 Mile	5 Mile
2005 Estimate Population	11,792	54,626	67,106
2005 Median HH Income	\$33,768	\$35,502	\$36,992

Location: 1311 Country Club Drive, Madera CA  
Available Space: ±28,000 Square Feet  
Lease Rate: \$0.50 NNN

## FEATURES

- High profile and high traffic regional center anchored by \$0.99 Cents Only, Fallas Paredes & Carl's Jr.
- Located along the Major Retail Corridor in Madera
- Easy access to Highway 99
- Nearby Tenants include Kragen, Mervyns, Save Mart & Longs Drug



**CoSol**  
COMMERCIAL  
REAL ESTATE

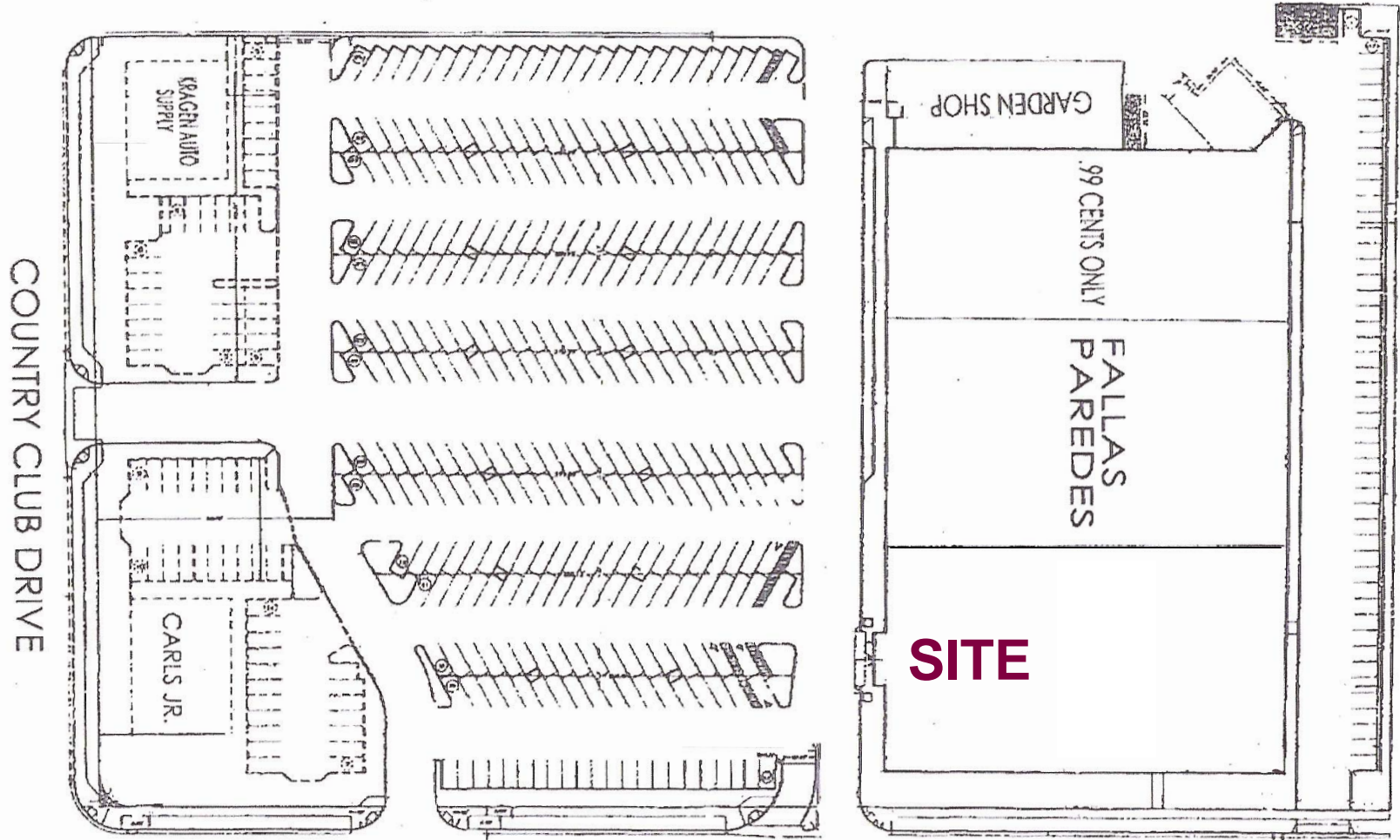
FOR MORE INFORMATION CONTACT

Tim Bettencourt

CoSol Commercial Real Estate

(209)521-1591

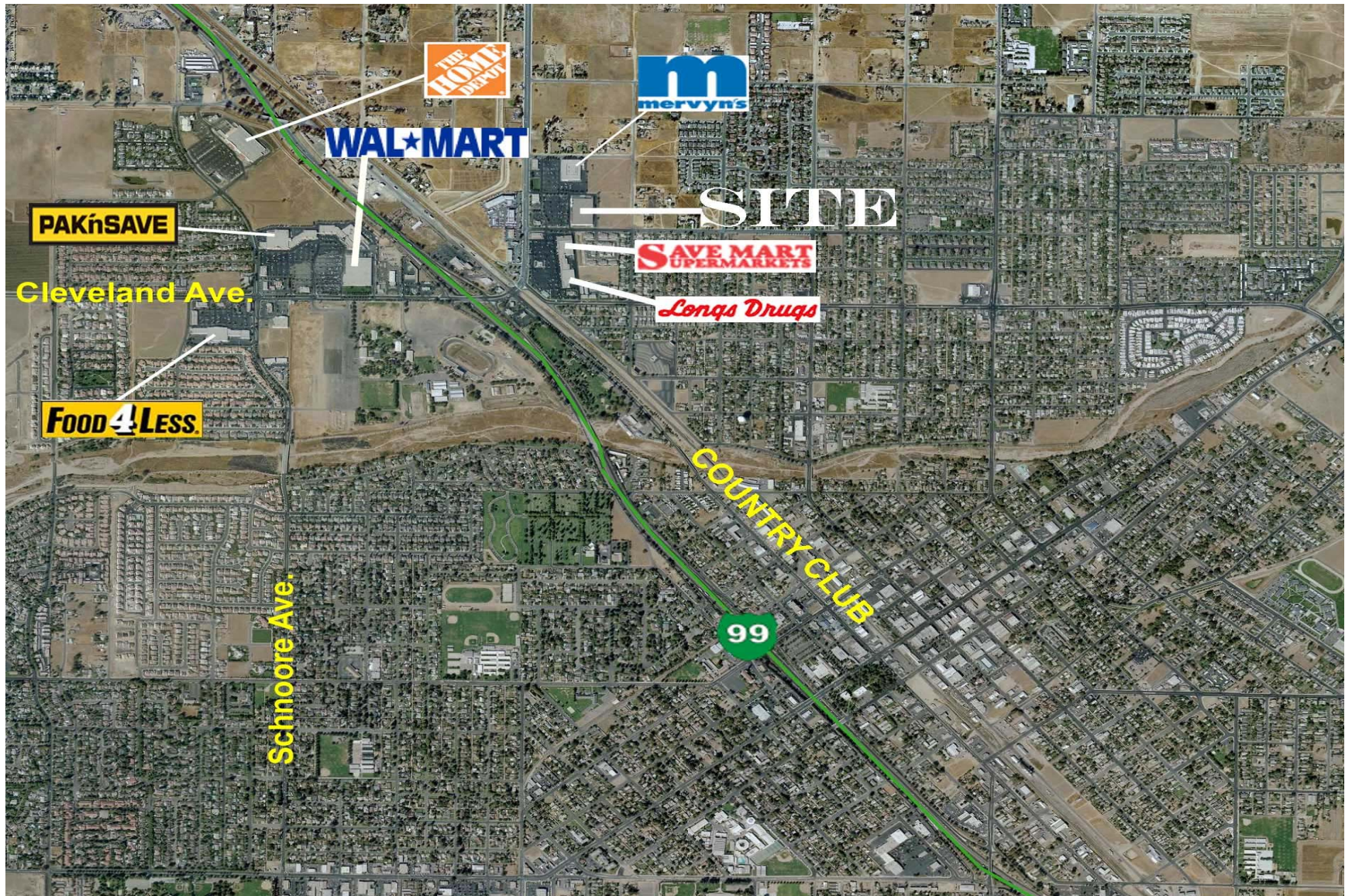
# FOR LEASE- 1311 Country Club Drive - Madera, CA



**COSOL**  
COMMERCIAL  
REAL ESTATE

SHERWOOD WAY

# FOR LEASE- 1311 Country Club Drive - Madera, CA



2020 Standiford Ave. Bldg D1, Modesto CA 95350

[www.cosol.net](http://www.cosol.net)

The information above has been obtained from sources believed reliable. While we do not doubt its accuracy we have not verified it and make no guarantee, warranty or representation about it. It is your responsibility to independently confirm its accuracy and completeness.