



1146 Olivewood Drive | Merced, CA

CONTACT EXCLUSIVE AGENTS:

TIM BETTENCOURT
tbettencourt@cosol.net
(209) 521-1591

JAKE MAIORINO
jmaiorino@cosol.net
(209)521-1591

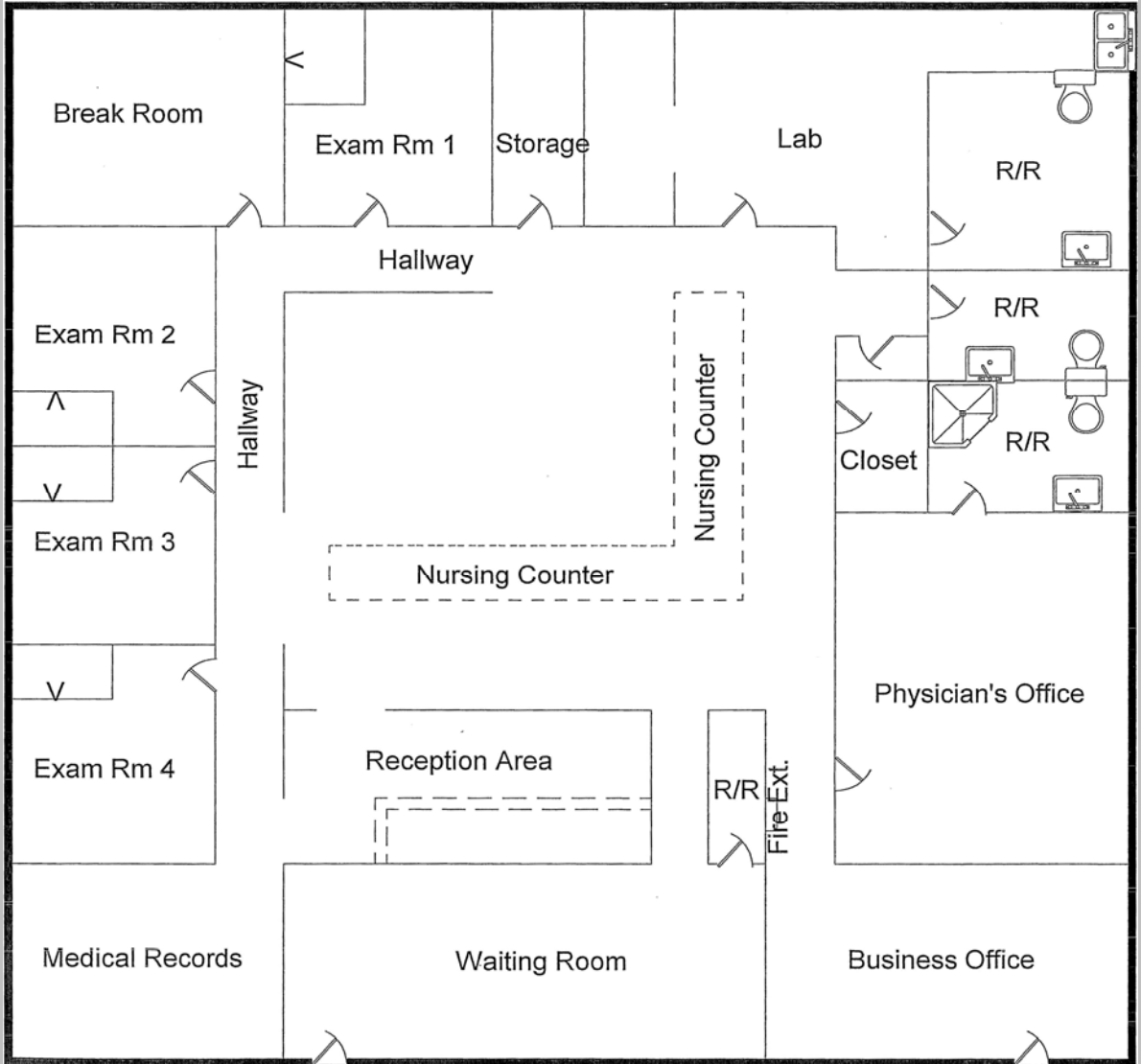
COSOL COMMERCIAL REAL ESTATE
2020 STANDIFORD AVE., SUITE D-1
MODESTO, CA 95350

PHONE: (209) 521-1591
FAX: (209) 521-0142

- Approximately \pm 2,360 SF Medical Office Condo
- Layout Includes Waiting Room, Nurses Station, Several Exam Rooms, Four Restrooms, Lab, Medical Records Office, and Break Room
- Located In The Olivewood Office Condominium Project
- Priced Below Replacement Costs
- "Turn Key" Medical Office
- Large Parking Lot Located Within The Office Complex (Ratio 1:200)

Sales Price: \$400,000





FLOOR PLAN

CONTACT EXCLUSIVE AGENTS:

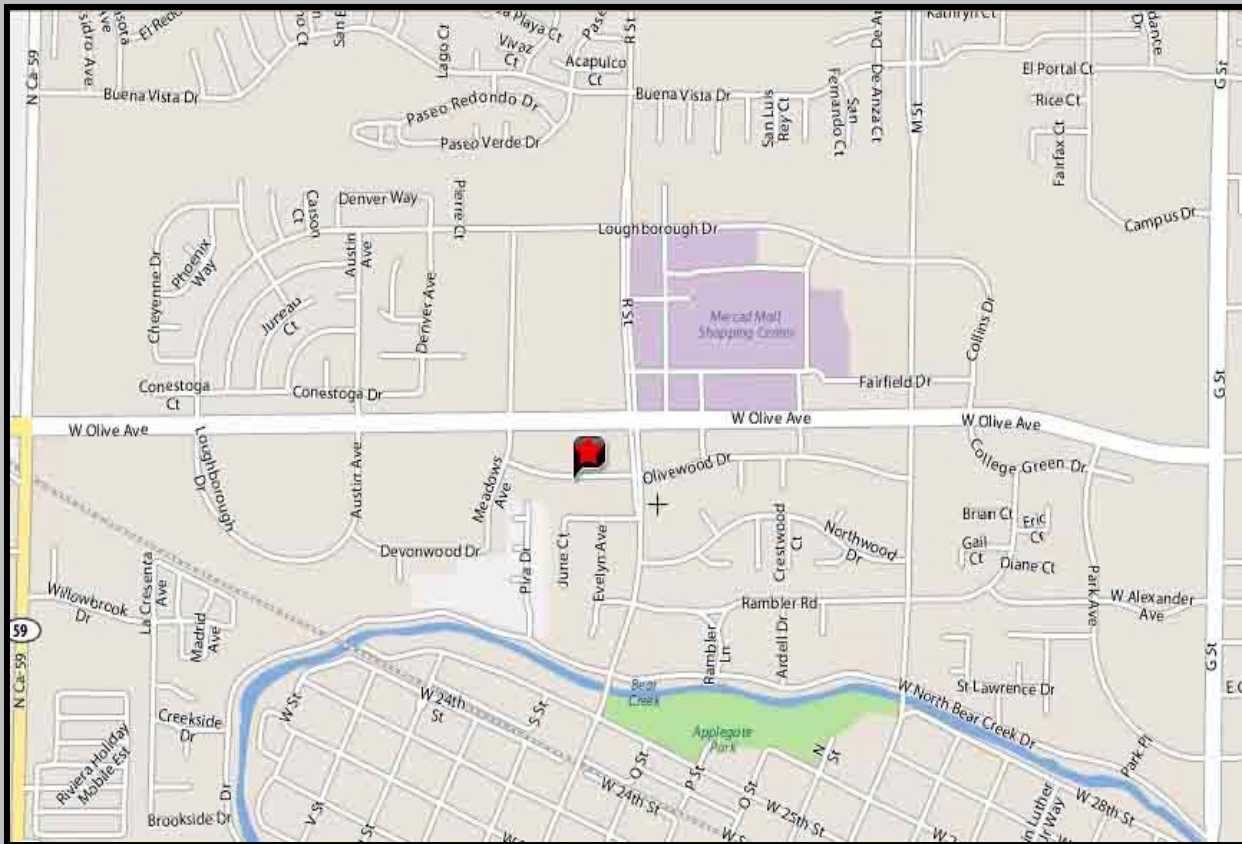
TIM BETTENCOURT
 tbettencourt@cosol.net
 (209) 521-1591

JAKE MAIORINO
 jmaiorino@cosol.net
 (209)521-1591

COSOL COMMERCIAL REAL ESTATE
 2020 STANDIFORD AVE., SUITE D-1
 MODESTO, CA 95350

PHONE: (209) 521-1591
 FAX: (209) 521-0142





1146 Olivewood Drive | Merced, CA

CONTACT EXCLUSIVE AGENTS:

TIM BETTENCOURT
tbettencourt@cosol.net
(209) 521-1591

JAKE MAIORINO
jmaiorino@cosol.net
(209) 521-1591

COSOL COMMERCIAL REAL ESTATE
2020 STANDIFORD AVE., SUITE D-1
MODESTO, CA 95350

PHONE: (209) 521-1591
FAX: (209) 521-0142

